



Technical Data

wedi Fundo Shower System | Riolito and Riofino



## wedi® Fundo Shower System-Riolito and Riofino

### Overview

wedi® Waterproof Shower Systems offer reliable, cost-efficient solutions for constructing 100% waterproof and mold proof showers. These systems are easy to install and open up a whole new world of design possibilities for showers, wet areas and baths. wedi Shower Systems blend the traditional values of design flexibility and robustness while offering the added benefit that comes with state-of-the-art material and manufacturing technologies.

Used in combination with wedi Building Panels on walls, our shower bases offer an excellent alternative to traditional installation methods. No more pre-sloping base line, mud bed, waterproofing membranes and weephole drains. Eliminate the risks of base liner cracks, clogged weepholes and mold growth, plus reduce the installation time from 2-3 days to only 30 minutes.

wedi's pre-sloped Fundo Riolito and Fundo Riofino shower bases feature the ONLY fully sealed and factory integrated waterproof drain assembly. The level perimeter of these shower bases guarantees a perfect installation when recessing the base into a subfloor where a flush to the floor entry is required. The large, tileable and sloped areas around the drain make the tile installation clean and professional. These unique prefabricated and directly tileable units allow water to drain away through a narrow gap between the cover plate and adjacent tiling.

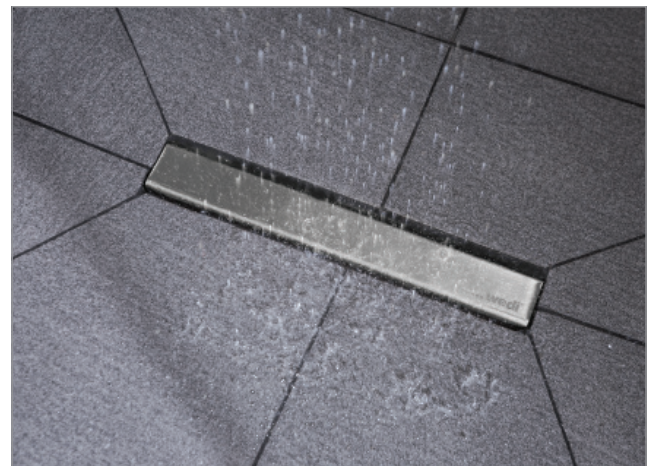
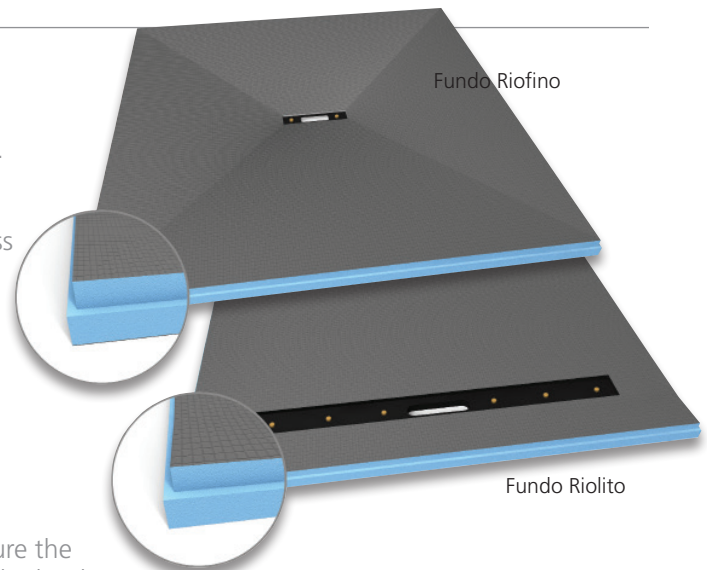
The system's linear drain is integrated and factory sealed into the floor base. Unlike with other product assemblies available in the market, wedi covers all the details for the shower system assembly.

### General Product Description

wedi Fundo Riolito/Riofino shower bases are a reliable, cost-efficient solution for constructing waterproof flush (recessed) or over-subfloor shower floors. These ready-to-tile floor units are simple to install. Even when incorporating small mosaic tiles, wedi Fundo Riolito and Fundo Riofino have a heavy duty point load capability, a coating that allows for it and a ready-made slope for perfect setting. Used in conjunction with wedi Building Panels on walls, Fundo shower bases offer an alternative to traditional installation methods — no more pre-sloping base liners, mud beds, waterproofing membranes and the weep hole drain. Fundo also eliminates the risks related to conventional installations such as base liner cracks, clogged weep holes and mold growth in mud beds. These prefabricated shower bases reduce installation time from 2-3 days to 30 minutes. All wedi shower substrate installations are ready-to-tile the same day.

All wedi shower bases can be easily cut to size or extended with pre-sloped extension panels to fit custom showers and accommodate offset drain locations. Fundo Riolito and Riofino bases can be cut to size with hand saws or skill saws. Round, curvy cuts can be made with a hand saw or jig saw.

wedi shower accessories are also available to complete the entire shower system – wedi Building Panels to create a waterproof transition into the walls, pre-sloped solid foam curbs, ADA compliant sloped shower ramps, recessed niches and corner seats and of course wedi joint sealant to seal and fuse all components together.



### Fundo Shower System Components Featuring the Fundo Riolito and Riofino Shower Bases

#### Shower Floor Bases

**Fundo Riolito:** Pre-sloped shower base with fully sealed and integrated linear drain

3' x 5' – 44" drain

4' x 6' – 44" drain

4' x 5' – 24" drain

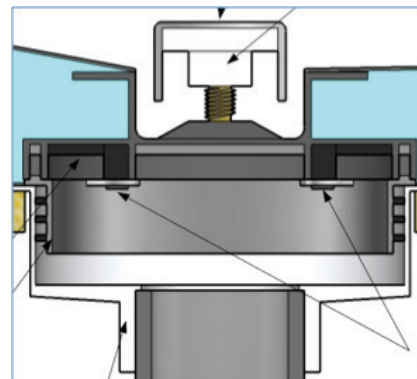
32" x 5' - 24" drain

**Fundo Riofino:** Pre-sloped shower base with center or offset off-center, shorter linear drains

3' x 5' - 12" center drain

4' x 4' - 12" center drain

3' x 6' - offset drain



#### Drains

Fully sealed and integrated linear drains. Drain bodies made of PVC. Integrated into pre-sloped floor base and made to connect with PVC cement to a schedule 40 2" PVC pipe cut below the subfloor.

#### Riolito and Riofino Cover Plates

Three cover plate options are available for the Fundo Riolito and Riofino shower bases

- Standard
- Exclusive
- Tileable



### Fundo Riolito and Fundo Riofino Shower Bases Product Features

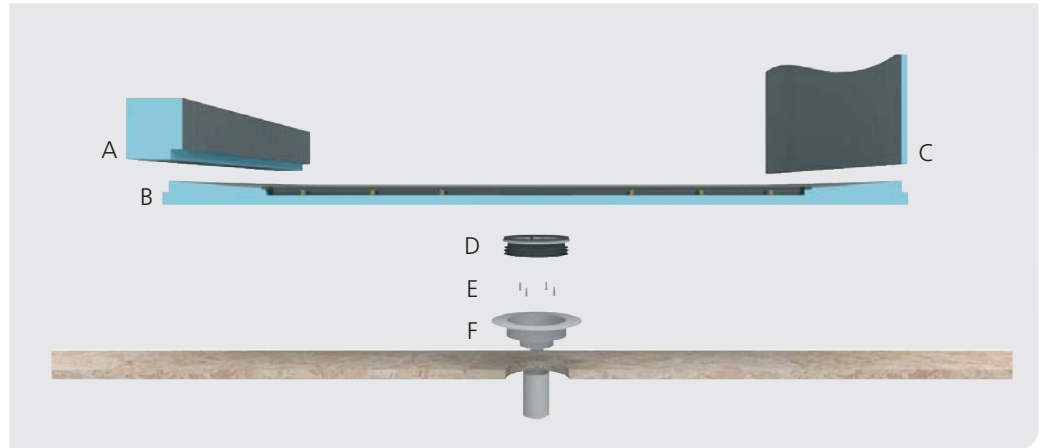
wedi Fundo Riolito and Fundo Riofino shower bases are prefabricated, pre-sloped, fully sealed with an integrated linear drain and ready-to-tile. Water drains away through a narrow gap between the cover plate and adjacent tiling. wedi Fundo Riolito and Fundo Riofino shower bases can be installed with wedi Building Panels and Curbs to guarantee a waterproof assembly. Large format tiles can be used in the thinbed process. Both shower bases feature a true-level slope and are ADA Compliant when recessed into a subfloor.

- Simple drain hook up
- Ideal for small or large format tile with limited cuts
- Preferred designs for ADA compliance
- Easy drain cleaning
- Drain height adjustable from 1/4" to 3/4"
- Level perimeter unlike other linear products
- Composed of a closed cell extruded polystyrene foam core with a glass mesh wrap and cement based, water resistant coating
- Lightweight, easy to handle, cut & install
- 100% waterproof as tested using ANSI A118-10/ASTM D4068
- 100% waterproof system assembly performance as tested acc. to PS 46-2010 ICC PMG Test Report 1189
- Mold proof
- Thermally insulating
- Great for tile bonding using cement-based thinset mortar

## Information

### Legend

- A Curb
- B wedi Fundo Riolo/Riofino
- C Building Panel
- D Sealing collar
- E Screws
- F Drain body



### Tool & Material

- Bucket
- Notch Trowel
- Drill with Thinset Mixer
- Utility Knife
- Straight Edge/T Square 5 ft or longer
- Speed Square
- Caulk Gun
- Handsaw
- Flat Head Screwdriver
- Cordless Drill or Hammer
- Solid Putty Knife
- Paper Towels
- Level
- Circular Saw
- Saw Horse
- Tape Measure
- Permanent Marker
- Extension Cord for Powertools
- PVC Pipe Cement Glue and Primer
- Inside PVC Pipe Cutter
- Shop vacuum cleaner

## Installing wedi® Fundo Shower Base onto wooden or concrete floors

### Before Installation

- Subfloor is sound, level and meets deflection criteria. Wooden or concrete structural substrates are dry and loadbearing. Steel framing is loadbearing.
- Floor joists not to exceed 16" o.c. Subfloor panels 3/4" T&G EGP or equivalent.
- If Shower base is to be installed floor level, make sure you build out a stable depression and deep enough to receive base + thin set
- 2" PVC pipe is cut 1 1/8" to 1 1/4" below top of sub floor surface
- 2" drain assembly below floor is stabilized and will not sink under water load
- Make sure wedi drain and 2" pipe is safely connected using PVC cement and primer
- Only wedi products (wedi sealant, wedi fasteners, wedi building panel, wedi curb, wedi ramp) are used for wedi Fundo Riolito/Riofino assembly.
- Installer has been instructed by wedi staff or has been informed about proper wedi assembly steps through wedi installation brochure and video.
- The bottom of wedi wall panels shall be supported by 2 layers of 2 x 4's stacked horizontally on the floor
- wedi shower bases can be cut to size using a skilsaw. The Z notch channel must be remade. Remove all sawdust and contaminants from base and channels.



**1** Cut the 2" pipe 1 1/8" to 1 1/4" below the top of the subfloor surface of the floor construction. Make sure that the cut out fits to the Fundo panel drain. Cut out a 5 1/4" to 6" diameter hole around the 2" pipe to allow the wedi drain to be inserted into the subfloor. The drain and trap have to be sturdily fastened to the subfloor.



**2** Assemble the drain unit following the instruction drawing.



**3** Glue and seal the wedi drain body to the 2" pipe. Mount the searing collar to the wedi Riolito/Riofino underside counterpart using a manual phillips screwdriver.



**4** Skim coat the thinset ANSI 118.4 and comb through with a 1/4" x 1/4" notch trowel.



**5** Trowel the thinset on the rear side of the Fundo again using a 1/4" x 1/4" notch trowel.



**6** Press the Fundo firmly into the thinset bed, ensuring that the installation is level and void free. Apply some weight equally and for at least 30 minutes (thinset bags).

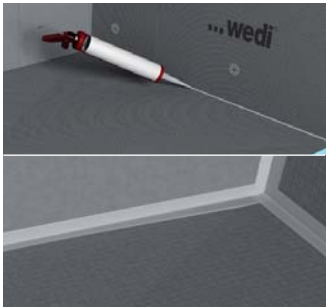




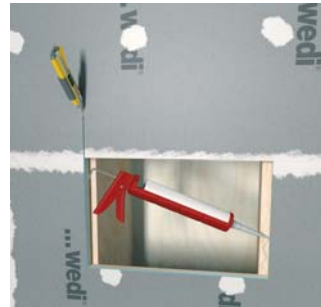
7 Set up a continuous 1/2" bead at the perimeter channel and only in areas where you can immediately install a building panel into the fresh sealant.



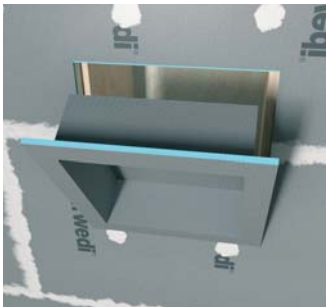
8 You are ready to install the wedi panels around the Fundo, fixed and sealed in the Fundo channels bead of wedi sealant. Fasten the panels directly to the studs using one wedi fastener per foot. One extra fastener is set in between seams of panels to create a flush transition.



9 Set continuous 1/2" beads of wedi sealant between all panel connections. Excessive sealant is smoothed out. Another 1/2" bead is set over all seams in the assembly and spread flat with a putty knife. Seams must be covered 3/4" each side, fastener points must be covered with wedi sealant.



10 wedi Niches are installed in a cut out in the wedi wall and attach with it's flange right into the center of 16 o.c. studs. wedi sealant is set along the connection of wall to niche.



11 2 Fasteners each side of the niche are set to create a flush transition to the wall panels. Another 1/2" bead of wedi sealant is spread over fasteners and seams.



12 A continuous 1/2" bead of wedi sealant is set into the channel and along the vertical curb notch part. A 1/2" bead of wedi sealant is set against both wedi walls. A 1/2" bead of thin set mortar is set on the floor. The tightly cut to fit curb is pressed into the connection.

#### After Installation

- All bottom perimeter joints, curb joints, vertical and horizontal panel joints are visibly covered with wedi sealant. Coverage should be continuously visible for at least 3/4" to 1" on each side of the joint.
- No mastic adhesives are to be used to install tile.
- Ceramic tiles smaller than 2"x2" must be grouted using epoxy grout. River Rock or Pebble Stones must be grouted with a modified cementitious sanded grout.
- Large format tile can be used on wedi Fundo bases. The tiles must be cut where the slope fields meet.
- When complete wedi shower system is installed with wedi joint sealant, a water flood test may be performed only 2 hours after final application of wedi joint sealant (application temperature must be ambient / interior with normal relative humidity and temperatures above 40°F).

## Installation instructions wedi Fundo Riolito Drain Cover

### General Information

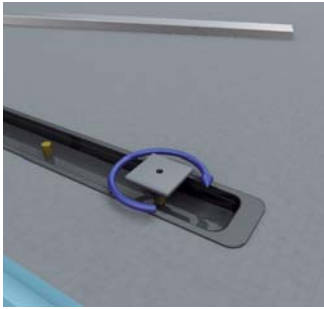
A Drain Cover Fundo Riolito standard: Polished Stainless Steel Standard Version

B Drain Cover Fundo Riolito exclusive: High Grade Stainless Steel Version

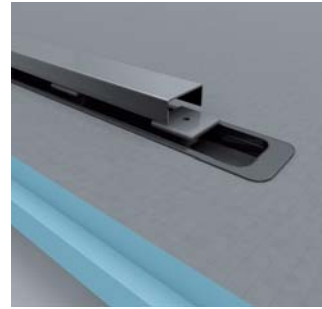
C Drain Cover Fundo Riolito tileable: Can be tiled with epoxy glue/adhesive. Can be used for 1/4" and 1/2" tile/stone (reverse cover)



- i** • Where wedi building panel or curb overs/caps are installed over horizontal surfaces (seats, curbs, tubdeck transitions) do not set any fasteners and do not allow the glass door installation to penetrate the wedi panel as it is your waterproofing.
- Make sure that doors are installed tight to contain water inside the shower. Make sure doors are installed to only load bearing reinforced framing.
- Where wedi building panel is installed over corners of a structure showing an angle other than 90° please miter the board edges to gain adhesion surface. Utilize a wedi sealing tape in addition to regular sealing for safety.

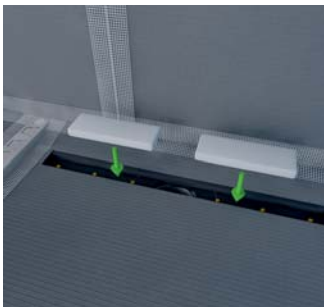


**1** Mount the screw heads to the threaded bolts inside the drain channel and bring them to the desired height so that the drain cover finish will sit slightly lower or flush with your tile or stone.



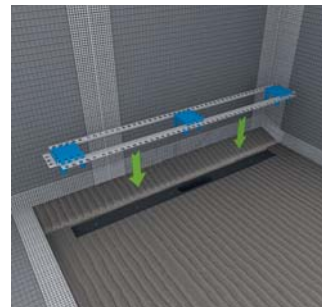
**2** Align the square screw heads so that the drain cover finish can be inserted. The screw heads will support the drain cover finish even under heavy duty conditions.

## Spacers



System includes spacers which can be used to align the screw heads before inserting the cover plate and they can be used to lay out tile or stone straight to the spacer which stops the tile at the edge to the channel.

## Profile clamps



System includes clamps which can be used to temporarily fix wedi Jolly tile profiles/ trims in position around the channel edge before and when tile is set.



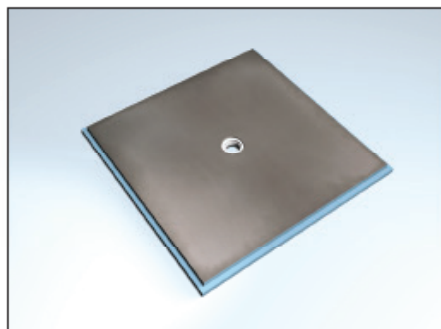
### Straight and Corner Extension Panels to Enlarge Fundo Riolito and Fundo Riofino Shower Bases

To make complicated designs for shower floor extensions as quick, easy and safe as possible, wedi offers prefabricated and pre-sloped panels that connect to wedi Fundo bases. These extension panels come as a corner element that would extend around a corner of a shower base, and as a straight element to extend a side of a shower. The extension panels feature a slope of  $\frac{1}{4}$ "/ft. and are pre-grooved to connect with the Fundo's channel groove and the adjoining extension panels to enlarge shower areas. Because wedi Fundo Riolito and Riofino feature a perimeter thicker than  $1\frac{1}{2}$ ", it is recommended to integrate the extension panels in some cases using a  $\frac{1}{2}$ " or thicker wedi building panel underneath (adheared with thinset mortar) to build up the connection height.



### wedi® Fundo Corner Extension - Step by Step Installation

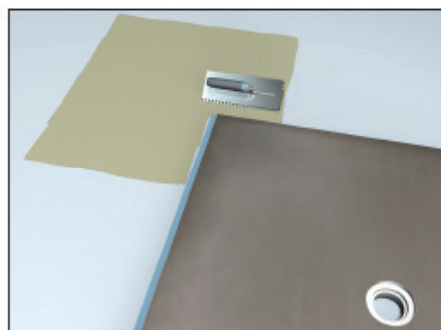
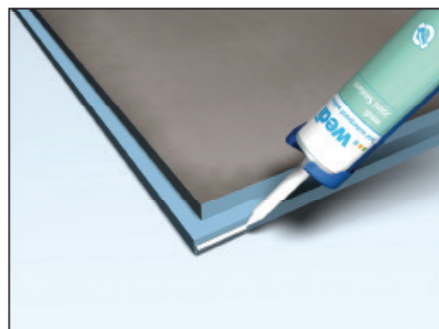
Includes: 1 Pc. Fundo Corner Extension Corner or  
1 Pc. Fundo Corner Extension Straight



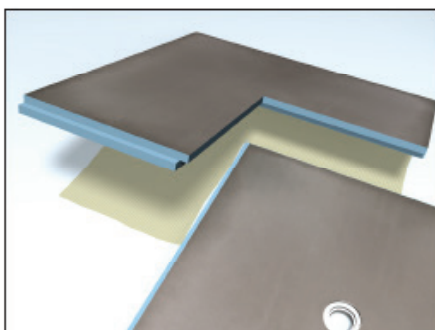
1. wedi® Fundo shower base is installed around center of the shower area.



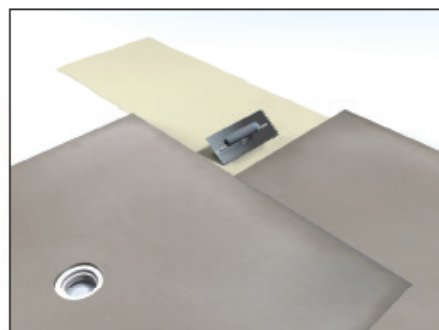
2. A  $\frac{1}{2}$ " bead of wedi® Joint sealant is continuously applied on the horizontal and vertical surface area of the Fundo base channel.



3. As when installing the Fundo base, apply a  $\frac{1}{2}$ " bed of modified thinset mortar in the area where the wedi® extension element will be installed. Make sure the mortar does not contaminate the wedi® Joint sealant.



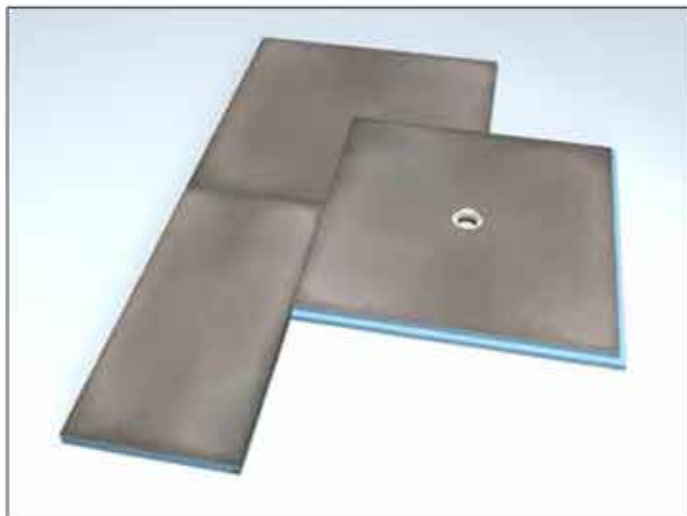
4. Here, a wedi® corner extension is laid into the thinset bed and the tight shiplap connection between extension and base is made with the beads of joint sealant acting as waterproofing and adhesion promoter.



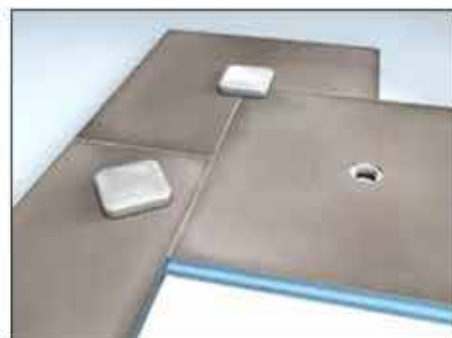
5. The straight extension elements can be used to further continue creating your ready to tile, sloped shower floor in both directions of the corner. The installation procedure is identical with steps 2-4.



6. The side connections between corner extension and straight extension panel also offer a shiplap notch in which wedi® joint sealant is applied as described in step 2.



7. The straight extension is now properly embedded in modified thinset mortar and tightly sealed and connected to the Fundo base and the corner extension panel.



8. Finally, a continuous 1/2" bead of wedi® joint sealant is applied over all surface connection joints and spread over the joints using a putty knife. Weights are applied equally over the shower floor to promote a firmer bond with the thinset mortar on the floor and to enable you to continue working on the shower walls immediately.

## General Technical Properties

### wedi Fundo Riolito and Fundo Riofino

#### Technical Properties & Performances of wedi Fundo Riolito/ Riofino

<b>National Approval:</b>	ICC PMG 1189/ ISO 9001
<b>Performance Tests performed by</b>	QAI Laboratories
<b>Quality Control Management by</b>	ICC / ISO

<b>Material Composition:</b>	
Core Material:	Extruded Polystyrene closed cell rigid foam
Surface Coating:	Sanded cement and latex based polymer
Drain:	PVC made 2" Schedule 40 trap/pressure fit + glue connection combination model


Test Type	Method/ Standard	Result	Passed
Field Installed Shower Kit Assembly Performance	IAPMO PS 46	Complies	Yes
Performance in comparison to waterproofing membranes	ANSI 118.10	Complies	Yes
Shower Base Functionality	IAPMO PS 106	Complies	Yes
Drain Code Compliance	ASME A112.18.2/ CSA B125.2	Complies	Yes
Waterproofness of product system ( base/wall/joints)	ASTM D 4068	Waterproof	Yes
Shear Strength of surface coating	ASTM C 273	>53.5 PSI	Yes
Flange/Fixture seal ( Joints to wedi wall panel)	IAPMO PS 46	waterproof, no separation	Yes
1. 300 lbs loads placed on floor unit		No damage to unit, no water leakage in unit or at sealed joints	Yes
2. Joint Adhesion Test		Unit did not disassemble, no cracks, no leakage at seams	Yes
Fungus & Microorganism Resistance	IAPMO PS 46	No growth on any test specimen	Yes
Flexural Strength	ASTM C 203	252 PSI	Yes
Tensile Strength	ASTM D 1623	59 PSI	Yes
Linear Coefficient of Thermal Expansion	ASTM D 696	0.00 Btu in/hr ft <sup>2</sup> ·F	Reference
R- Value @ 75 ·F; Thermal Insulation Value	ASTM C 518	4.5 hr ft <sup>2</sup> /Btu/in	Reference
Temperature Exposure Limits	N/A	neg. 58 ·F / pos. 167·F	Reference

State & Local Approvals are available upon request.

wedi has tested products separately as well as in their wedi kit / wedi system assembly.

## National Building Code Compliances

### Compliance with current ICC Evaluation Service standards





ICC EVALUATION  
SERVICE

Most Widely Accepted and Trusted

ICC-ES PMG Listing

PMG-1189



Effective Date: May 1, 2013  
This listing is subject to re-examination in one year.

[www.icc-es-pmg.org](http://www.icc-es-pmg.org) | (800) 423-6587 | (562) 699-0543 A Subsidiary of the International Code Council®

CSI: DIVISION: 22 00 00—PLUMBING  
Section: 22 40 00—Plumbing Fixtures (Shower System Kit)

Product certification system:

The ICC-ES product certification system includes testing samples taken from the market or supplier's stock, or a combination of both, to verify compliance with applicable codes and standards. The system also involves factory inspections, and assessment and surveillance of the supplier's quality system.

Product: wedi Fundo Shower System and Tile Backer Board Underlayments

Listee: wedi Corporation  
1100 Landmeier Rd. Suite 200  
Elk Grove Village, Illinois 60007  
[www.wedincorp.com](http://www.wedincorp.com)

Compliance with the following codes:

2012 and 2009 International Plumbing Code® (IPC)  
2012 and 2009 International Residential Code® (IRC)  
2012 and 2009 Uniform Plumbing Code® (UPC)\*

\*Uniform Plumbing Code is a copyrighted publication of the International Association of Plumbing and Mechanical Officials

Compliance with the following standard:

ANSI A118.10-2008, Load Bearing, Bonded, Waterproof Membranes for Thin-Set Ceramic Tile and Dimension Stone Installations  
ICC-ES EG 159, Evaluation Guideline for Composite Backer Board  
ICC-ES AC 71, Acceptance Criteria for Foam Plastic Sheathing Panels Used as Water Resistive Barriers  
IAPMO PS 46-2012, Field-Fabricated Tiling Kits

Identification:

Packaging label for each system shall include the manufacturer's name or trademark as well as the ICC-ES PMG certification mark.

Installation:

The wedi Fundo Shower Systems shall be installed in accordance with the manufacturer's published instructions and the applicable code(s).

Shower system components shall be assembled and can be customized in the field. All shower bases and panels can be cut to size with hand saws or skill saws. Round curvy cuts can be made with a hand saw or jig saw.

When provided drains must comply with ASME A112.18.2 as applicable. The wedi pre-sloped, ready-to-tile shower bases may be used in lieu of an ANSI Z124.1.2 plastic shower receptors or any liner based shower installations. The wedi drain units do not require weep holes.

Models:

The wedi Fundo shower bases are pre-sloped, ready-to-tile floor units. The wedi building panels are engineered as a general purpose backer board and underlayment for tile and consist of a rigid extruded polystyrene foam covered on both sides with a cement-based resin surface and reinforcing mesh for durability and bonding with any type of thinset mortar. The systems linear drain is integrated and factory sealed into the floor base. System assembly and wedi components were proven to be waterproof and mold resistant when tested in accordance with A118.10-2008.

Shower system may include the following components: shower base, building panels, curbs, niches, seats, benches, ramps, vapor barrier, fasteners, cover plates, sealants and drain.


The wedi Fundo family line includes the following: *Primo*, *Riolito*, *Riofino*, *Discreto*, and *ECOBATH*.

Conditions of Listing:

1. The wedi Fundo Shower Systems shall be installed in accordance with the manufacturer's published instructions and the applicable code(s).
2. The wedi Fundo Shower Systems are manufactured by wedi GmbH, in Emsdetten, Germany under a quality control program with annual surveillance inspections by ICC-ES.

Listings are not to be construed as representing aesthetics or any other attributes not specifically addressed, nor are they to be construed as an endorsement of the subject of the listing or a recommendation for its use. There is no warranty by ICC Evaluation Service, LLC, express or implied, as to any finding or other matter in this listing, or as to any product covered by the listing.

Copyright © 2013



ICC-ES

Page 1 of 1

Find Current Report on  
[www.icc-es.org](http://www.icc-es.org)

## Technical Data: Fundo Shower System-Riolito and Riofino

---

### General Limitations

System must not be installed over uneven or non-load bearing substrates. System must not be exposed to temperatures over 165° F. Tiles smaller than 2 x 2" should be grouted with epoxy grout (with one exception being pebblestones). Do not install system over substrates subject to settlement and extreme movement. Two horizontal backing layers of 2 x 4" are recommended to guard the perimeter of wedi Fundo Riolito and Riofino and wedi Building Panel transition against separation movement.. Interior use only

Fundo Riolito and Riofino Drain Covers can be extended to be flush with up to a ¾" thick tile or stone applications. Do not cut into the bases closer than 2" around the perimeter of the integrated drain trench. Please note: wedi Joint sealant can set within 10-15 minutes and proper adhesion between products must be created by immediate connection through fresh sealant in between parts.

### Storage

Store dry and on flat surface. Do not expose to the elements.

### Disposal

Upon removal with attached building materials, the product should be disposed of as construction waster in appropriate containers.

### Warranty

Log on to [www.wedicorp.com](http://www.wedicorp.com) to learn more about wedi's warranty.

### MasterFormat™ 2004 Sections

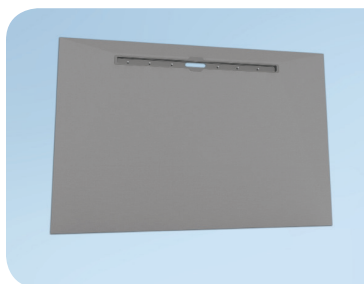
Section 09305 Tile Setting Materials and Accessories

Section 10185: Shower Compartments

Section 09300: Tile

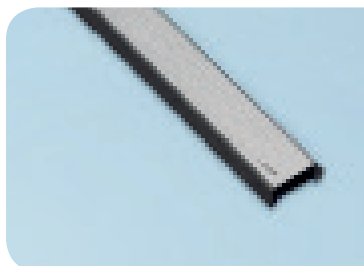


## Fundo Riolito | Floor Base, with Integrated Channel Drain



Description	External Dimensions Length x Width x Height	Unit	Item #
Fundo Riolito, floor base, with channel drain, 4- sided slope	3' x 5' x 2" incl. drain	1 pc	07-37-83/526
Fundo Riolito, floor base, 4- sided slope	4' x 5' x 2 1/2" incl. drain	1 pc	07-37-83/527
Fundo Riolito, floor base, 4-sided slope	4' x 6' x 2 9/16" incl. drain	1 pc	07-37-83/525
Fundo Riolito, floor base, 1- sided slope	32" x 5' x 2 7/16" incl. drain	1 pc	07-37-83/533

## Fundo Riolito Standard | Cover Plate, Stainless Steel

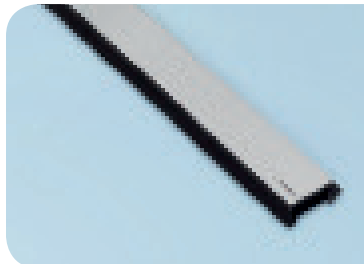


Description	Width x Length x Height	Unit	Item #
Fundo Riolito Standard drain cover for 3 x 5 ft. and 4 x 6 ft. Riolito base	1 5/8" x 43 1/4" x 3/4"	1 pc	67-67-97/009
Fundo Riolito Standard drain cover for 4 x 5 ft and 32" x 5' Riolito base.	1 5/8" x 27 5/8" x 3/4"	1 pc	67-67-97/012

! For tile installation heights of between 1/8" and 5/8"

- 1 Riolito drain cover, .06" thick stainless steel, brushed
- (1) 5/8" screw set

## Fundo Riolito Exclusive | Cover Plate, Stainless Steel



Description	Width x Length x Height	Unit	Item #
Fundo Riolito Exclusive drain cover for 3 x 5 ft. and 4 x 6 ft. Riolito base	1 5/8" x 43 1/4" x 3/4"	1 pc	67-67-97/008
Fundo Riolito Standard drain cover for 4 x 5 ft and 32" x 5' Riolito base.	1 5/8" x 27 5/8" x 3/4"	1 pc	67-67-97/005

! For tile installation heights of between 1/8" and 5/8"

- 1 Riolito drain cover, .06" thick stainless steel, with add'l .12" stainless steelplate, brushed
- (1) 5/8" screw set

## Fundo Riolito Tileable | Cover Plate, Stainless Steel



Description	Width x Length x Height	Unit	Item #
Fundo Riolito Tileable drain cover for 3 x 5 ft. and 4 x 6 ft. Riolito base	1 5/8" x 43 1/4" x 3/4"	1 pc	67-67-97/018
Fundo Riolito Standard drain cover for 4 x 5 ft and 32" x 5' Riolito base.	1 5/8" x 27 5/8" x 3/4"	1 pc	67-67-97/015

! For tile installation heights of between 1/4" and 3/4. Can be used with 1/4" and 1/8" tile inserts"

- 1 Riolito drain cover, stainless steel
- (1) 3/4" screw set



## Technical Data: Fundo Shower System-Riolito and Riofino

### Fundo Riofino | Floor Base, with Channel Drain



Description	Width x Length x Height	Unit	Item #
Fundo Riofino, floor base with channel drain	3' x 5' x 2" center drain; 1 15/16" thick at perimeter	1 pc	07-37-83/530
Fundo Riofino, floor base with channel drain	4' x 4' x 2" center drain; 1 15/16" thick at perimeter	1 pc	07-37-83/531
Fundo Riofino, floor base with channel drain	3' x 6' offset drain; 2 5/8" thick at perimeter	1 pc	07-37-83/532

### Fundo Riofino | Drain Covers



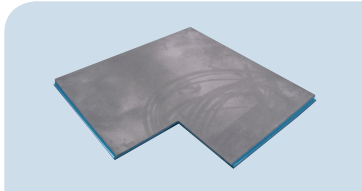
Description	Width x Length x Height	Unit	Item #
Fundo Riofino Standard drain cover	11 3/4" x 1 1/2" x 3/4"	1 pc	67-67-97/013
Fundo Riofino Exclusive drain cover	11 3/4" x 1 1/2" x 7/8"	1 pc	67-67-97/004
Fundo Riofino Tileable drain cover	11 3/4" x 1 1/2" x 3/4"	1 pc	67-67-97/014

### Fundo Discreto | System Component, for Creating Vertical Wall Drainage

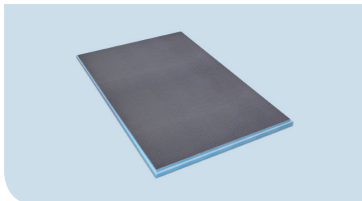


Description	Width x Length x Height	Channel Length	Item #
Fundo Discreto System Component Integrates into wedi seats, tileable cover available separately Well suited with Fundo Riolito	35.4" x 2"	1 pc	07-37-38/200

### Fundo | Extension Systems



Description	Width x Length x Thickness	Unit	Item #
Fundo Riofino Standard drain cover	142" x 42" x 2" to 1 1/2"	sheet	07-37-83/529
Fundo Riofino Exclusive drain cover	24" x 48", sloped 1/4"/ft.	sheet	07-37-83/528



! • For Fundo Shower Systems, extends 2' both sides. • Pre-grooved



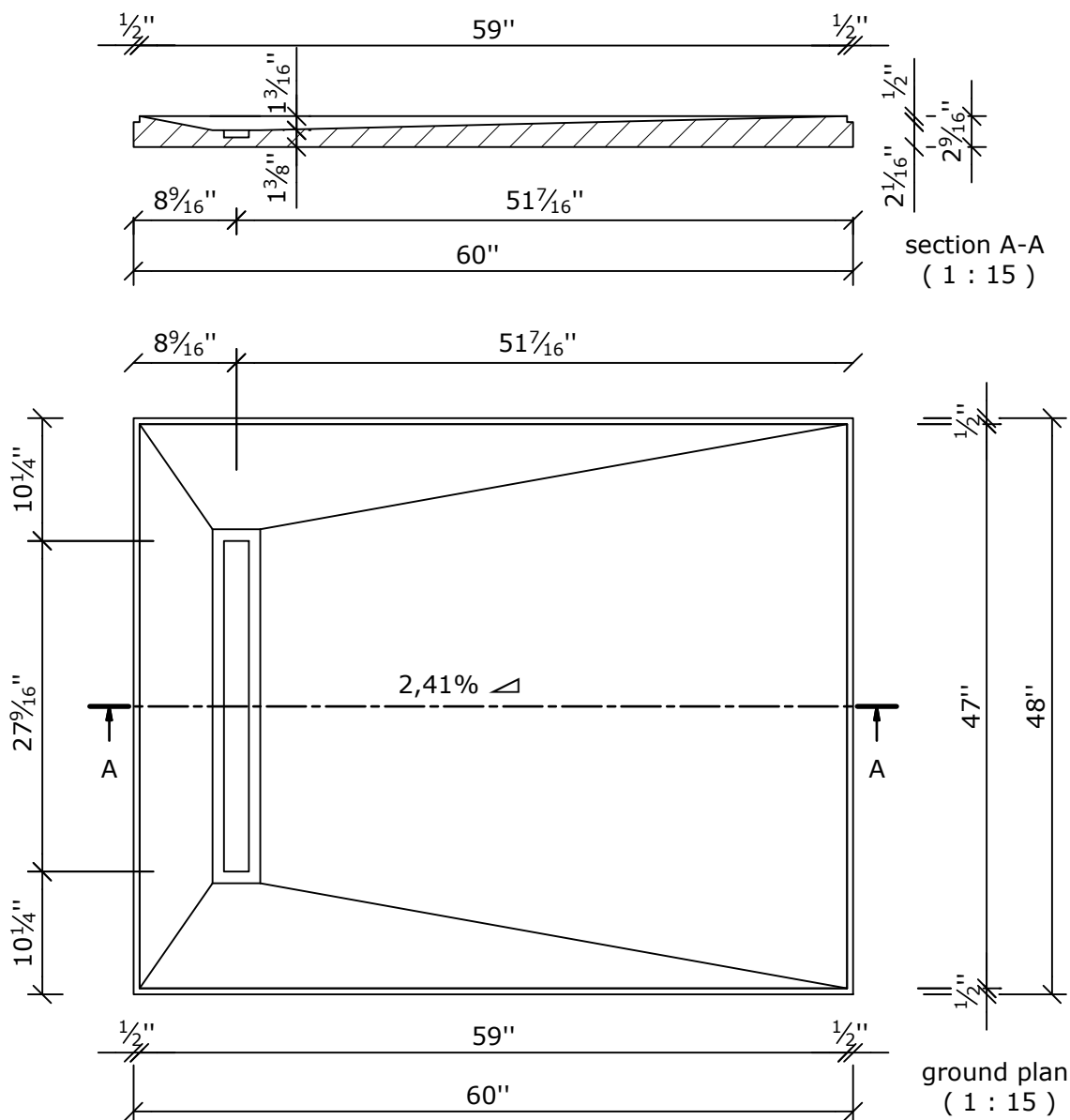
Be sure to ask for a  
Certified wedi Installer.



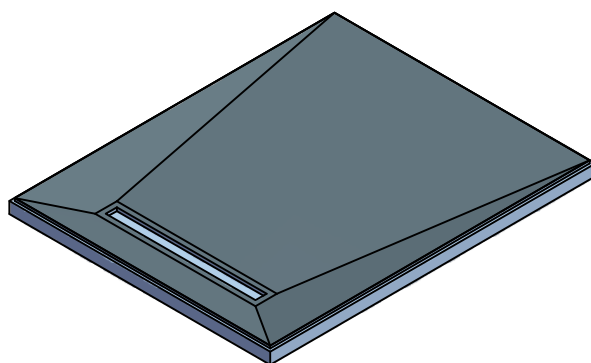
Contact us: [info@wediacorp.com](mailto:info@wediacorp.com)

Find wedi products & specs: [www.arcat.com](http://www.arcat.com)



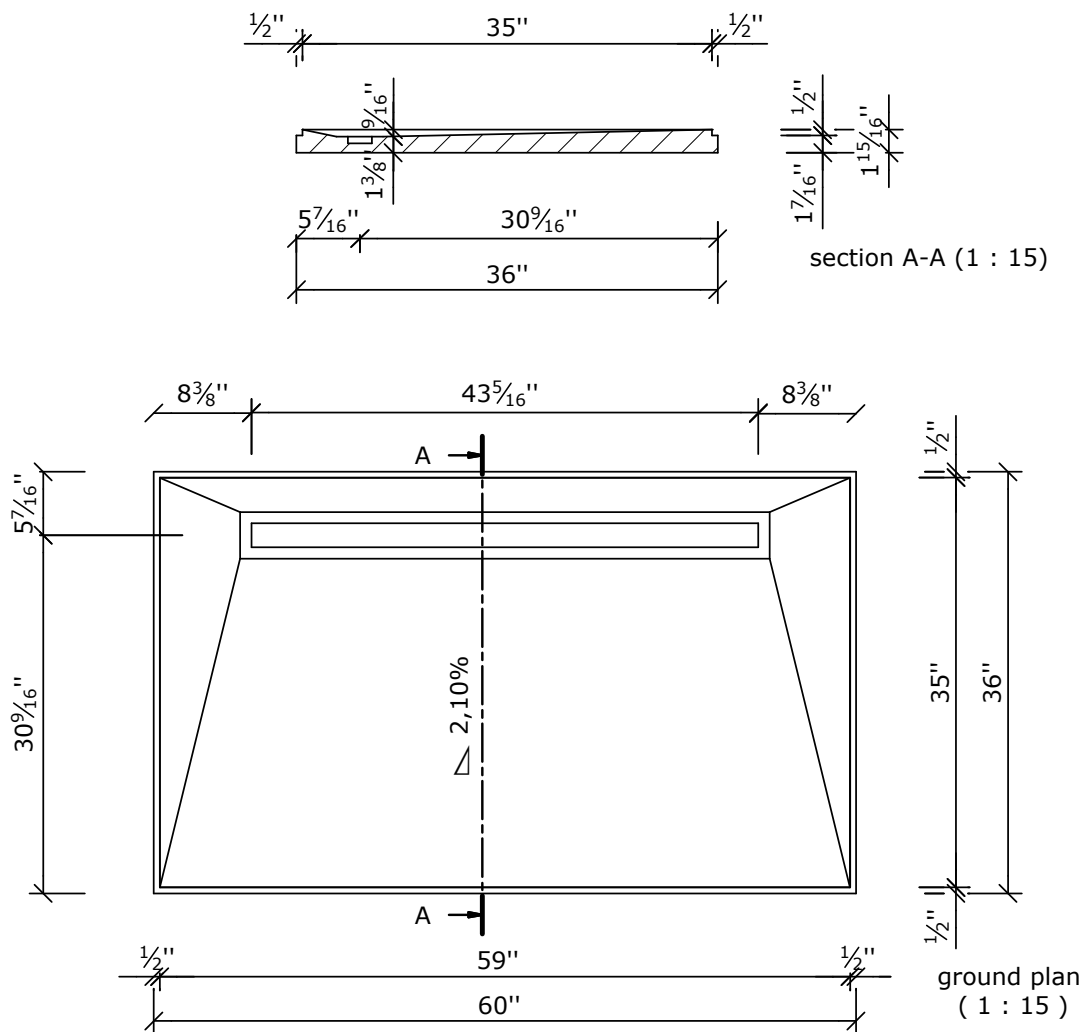


**NOTE:**  
slope 1/4" /ft minimum in all areas  
of shower base surface

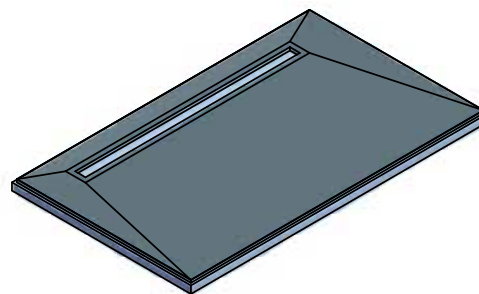


Zeichnungsnummer drawing number				Benennung/ designation		
Z 00 00 47 59				wedi USA Fundo Riolito 4' x 5'		
Kunde/ client : ---				Art.Nr.: 07-37-83/527		
BV/ BP : ---						
				wedi GmbH Hollefeldstrasse 51 48282 Emsdetten  wedi Vertrieb/ sales wedi Projektteilung/project dept.  ... <b>wedi</b> ® Fon +49 (0)2572 / 156 - 0 Fax +49 (0)2572 / 156 - 133 Fon +49 (0)2572 / 156 - 0 Fax +49 (0)2572 / 156 - 239		
				Fertigungszustand/ Bautoleranzen: finished condition/ tolerances: nach DIN 18202		
A	Standardisierung	08.06.2012	pm			
Ausg. issue	Änderung modification	Datum date	Name name	Maße in Zoll dimensions in inch	DIN A4	filename: 073783527_USA_FU_Riolito_4x5_Endmaß.ipt

This drawing and its copyrights are owned by wedi GmbH.  
The use of this drawing is subject to prior,  
written authorization by wedi GmbH.



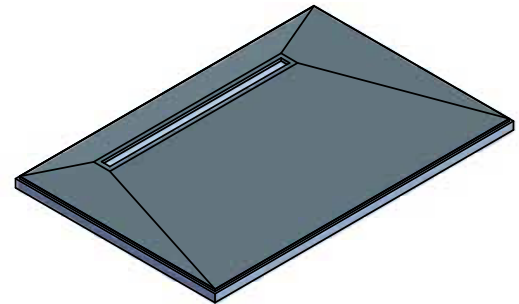
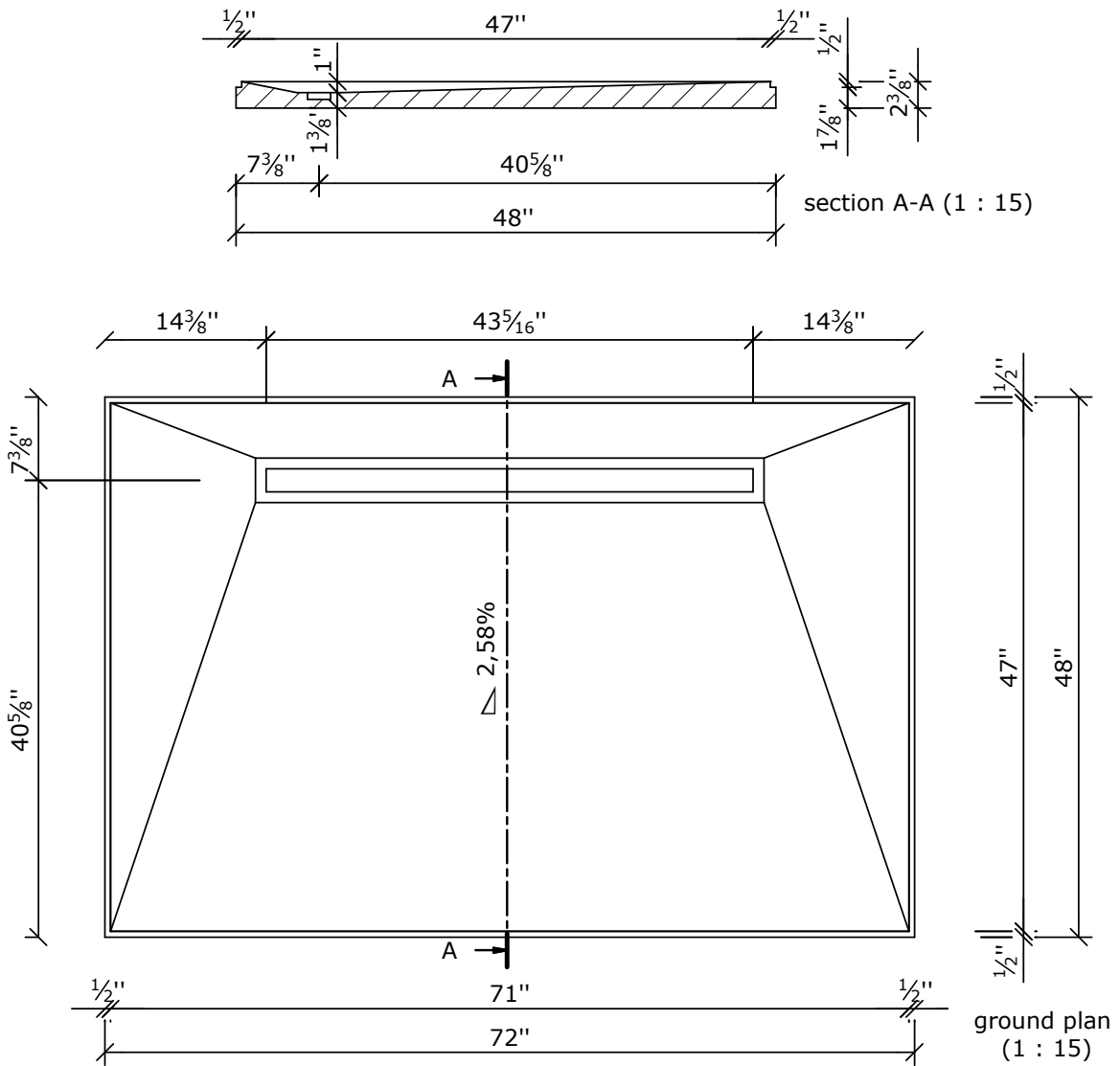
**NOTE:**  
slope 1/4" /ft minimum in all areas  
of shower base surface



Diese Zeichnung / Skizze ist Eigentum der wedi GmbH und  
unterliegt dem Urheberrecht. Die Verwendung bedarf in jedem  
Fall der vorherigen, schriftlichen Zustimmung der wedi GmbH.

Zeichnungsnummer drawing number					Z 00 00 42 31					Benennung/ designation					
					Kunde/ client : ---					wedi USA Fundo Riolito 5' x 3'					
					BV/ BP : ---					Art.Nr.: 07-37-83/526					
					Datum date	Name name				<div>wedi GmbH Hollefeldstrasse 51 48282 Emsdetten</div> <div><b>... wedi®</b></div>					
				3D drawn	26.11.2008	SVosskamp									
				2D drawn	26.11.2008	SVosskamp									
				CAD/CAM Progr.											
				Fertigungszustand/ Bautoleranzen: finished condition/ tolerances: nach DIN 18202							wedi Vertrieb/ sales				
											Fon +49 (0)2572 / 156 - 0				
											Fax +49 (0)2572 / 156 - 133				
											wedi Projektteilung/project dept.				
											Fon +49 (0)2572 / 156 - 0				
											Fax +49 (0)2572 / 156 - 239				
A	Standardisierung	08.06.2012	pm												
Ausg. issue	Änderung modification	Datum date	Name name	Maße in Zoll dimensions in inch			DIN A4		filename: 073783526_USA_FU_Riolito_5x3_Endmaß8.jpg						

This drawing and its copyrights are owned by wedi GmbH.  
The use of this drawing is subject to prior,  
written authorization by wedi GmbH.



Zeichnungsnummer  
drawing number

Z 00 00 42 30

Kunde/ client : ---

BV/ BP : ---

Benennung/ designation

wedi Fundo Riolito USA 6' x 4'

Art.Nr.: 07-37-83/525

				Datum date	Name name
			3D drawn	26.11.2008	SVosskamp
			2D drawn	26.11.2008	SVosskamp
			CAD/CAM Progr.		
B	Standardisierung	15.06.2012	pm	Fertigungszustand/ Bautoleranzen: finished condition/ tolerances: nach DIN 18202	
A	Materialstärke	01.06.2012	pm		
Ausg. issue	Änderung modification	Datum date	Name name	Maße in Zoll dimensions in inch	DIN A4

wedi GmbH  
Hollefeldstrasse 51  
48282 Emsdetten

**...wedi®**

wedi Vertrieb/ sales

Fon +49 (0)2572 / 156 - 0

Fax +49 (0)2572 / 156 - 133

wedi Projektteilung/project dept.

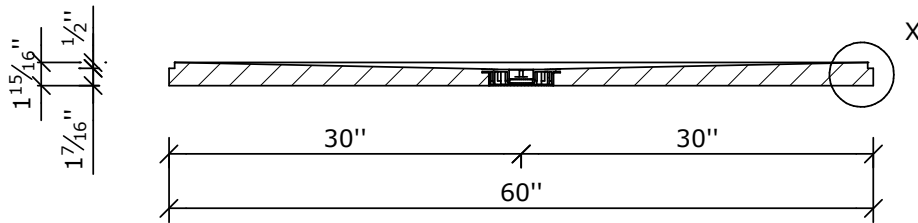
Fon +49 (0)2572 / 156 - 0

Fax +49 (0)2572 / 156 - 239

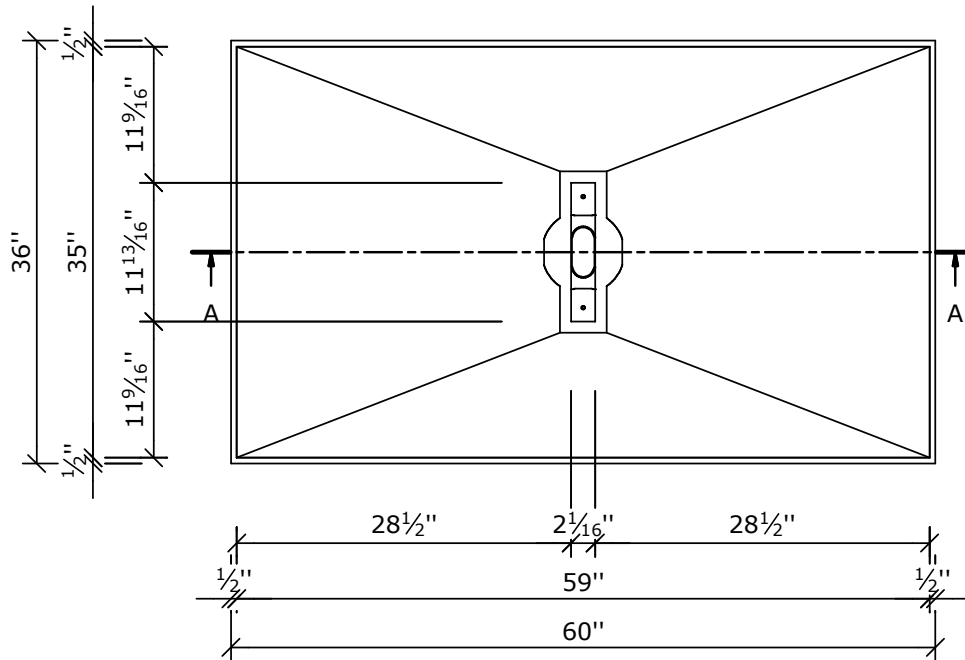
filename: 073783525\_USA\_FU\_Riolito\_6x4\_Endma8.ipt

Diese Zeichnung / Skizze ist Eigentum der wedi GmbH und  
unterliegt dem Urheberrecht. Die Verwendung bedarf in jedem  
Fall der vorherigen, schriftlichen Zustimmung der wedi GmbH.

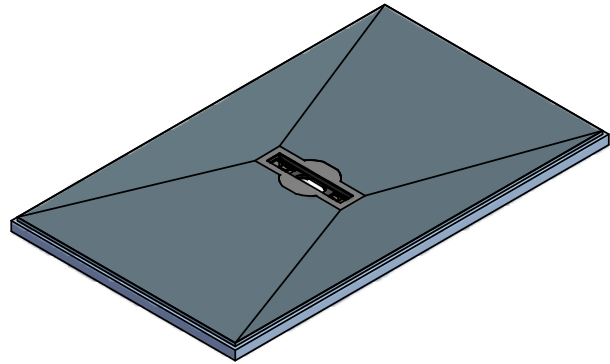
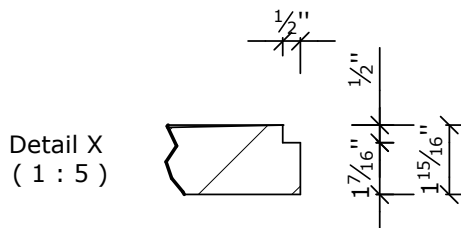
Diese Zeichnung / Skizze ist Eigentum der wedi GmbH und unterliegt dem Urheberrecht. Die Verwendung bedarf in jedem Fall der vorherigen, schriftlichen Zustimmung der wedi GmbH.



section A-A (1 : 15)



top view ( 1 : 15 )

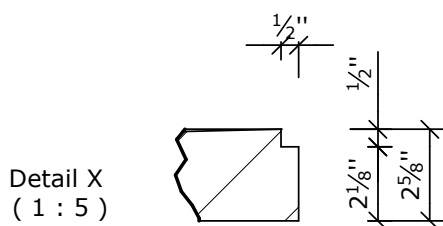
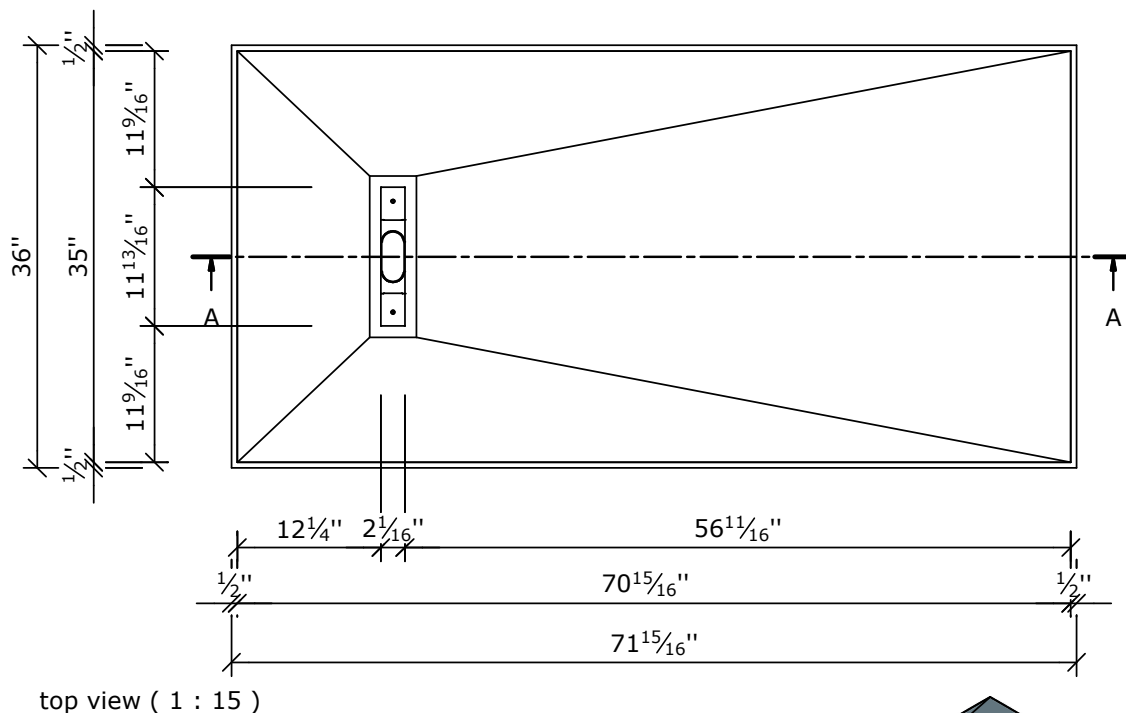
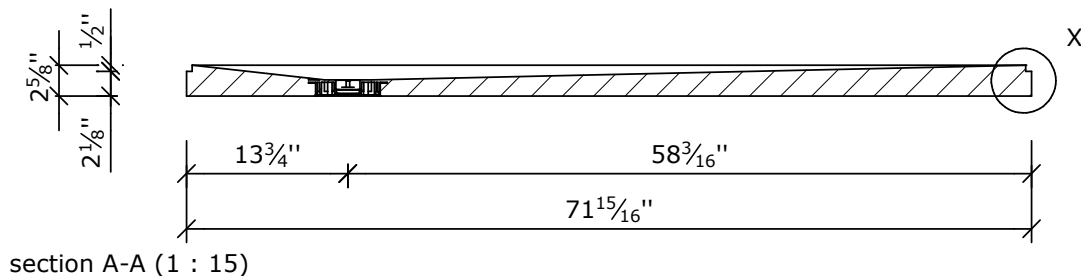


**NOTE:**

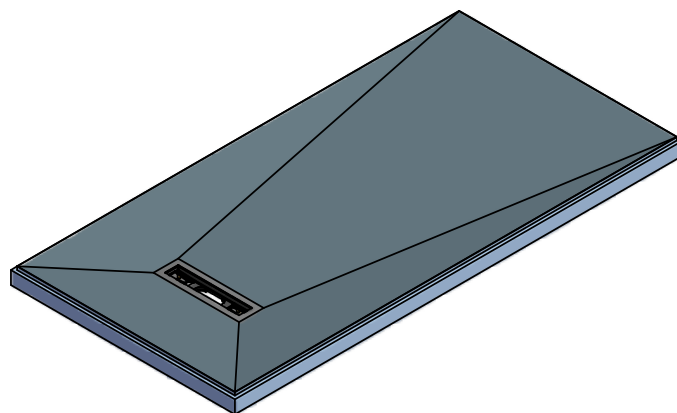
slope 1/4" /ft minimum in all areas  
of shower base surface

Zeichnungsnummer drawing number				<b>Z 00 00 57 54</b> Kunde/ client : --- BV/ BP : ---			Benennung/ designation <b>wedi USA FU Riofino 3' x 5'</b> Art.: 07-37-83/530		
					Datum date	Name name	wedi GmbH Hollefeldstrasse 51 48282 Emsdetten 		
				3D drawn	19.03.2012	nd			
				2D drawn	19.03.2012	nd			
				CAD/CAM Progr.					
				Fertigungszustand/ Bautoleranzen: finished condition/ tolerances: nach DIN 18202					
A	unit of measure	13.06.2012	nd				wedi Vertrieb/ sales Fon +49 (0)2572 / 156 - 0 Fax +49 (0)2572 / 156 - 133		
							wedi Projektteilung/project dept. Fon +49 (0)2572 / 156 - 0 Fax +49 (0)2572 / 156 - 239		
Ausg. issue	Änderung modification	Datum date	Name name	Maße in Zoll dimensions in inch	DIN A4		filename: 073783530_USA_Riofino_3x5_Endma8.ipt		

This drawing and its copyrights are owned by wedi GmbH.  
The use of this drawing is subject to prior,  
written authorization by wedi GmbH.



**NOTE:**  
slope 1/4" /ft minimum in all areas  
of shower base surface



Zeichnungsnummer  
drawing number

**Z 00 00 57 56**

Kunde/ client : ---

BV/ BP : ---

Benennung/ designation

**wedi USA FU Riofino 3' x 6'**

Art.: 07-37-83/532

				Datum date	Name name
			3D drawn	19.03.2012	nd
			2D drawn	19.03.2012	nd
			CAD/CAM Progr.		
			Fertigungszustand/ Bautoleranzen: finished condition/ tolerances: nach DIN 18202		
A	unit of measure	13.06.2012	nd		
Ausg. issue	Änderung modification	Datum date	Name name	Maße in Zoll dimensions in inch	DIN A4

wedi GmbH  
Hollefeldstrasse 51  
48282 Emsdetten

**... wedi®**

wedi Vertrieb/ sales

Fon +49 (0)2572 / 156 - 0  
Fax +49 (0)2572 / 156 - 133

wedi Projektteilung/project dept.

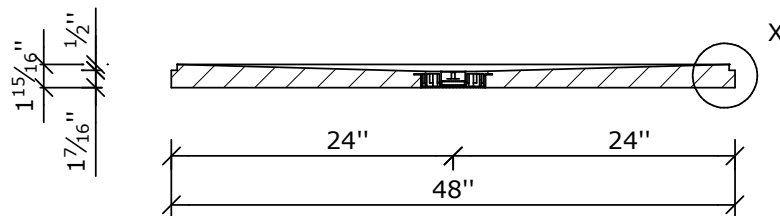
Fon +49 (0)2572 / 156 - 0  
Fax +49 (0)2572 / 156 - 239

filename: 073783532\_USA\_Riofino\_3x6\_Endmaß8.ipt

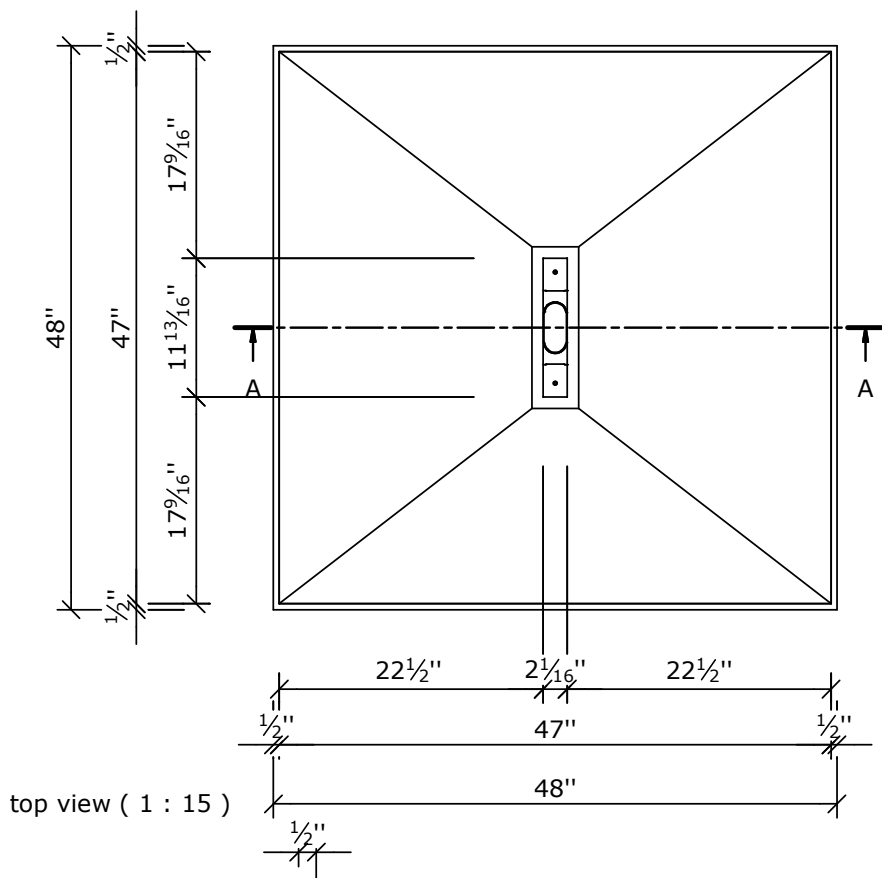
Diese Zeichnung / Skizze ist Eigentum der wedi GmbH und  
unterliegt dem Urheberrecht. Die Verwendung bedarf in jedem  
Fall der vorherigen, schriftlichen Zustimmung der wedi GmbH.



This drawing and its copyrights are owned by wedi GmbH.  
The use of this drawing is subject to prior,  
written authorization by wedi GmbH.

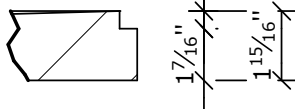


section A-A ( 1 : 15 )

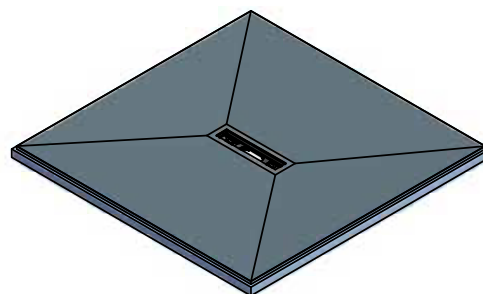


top view ( 1 : 15 )

Detail X  
( 1 : 5 )



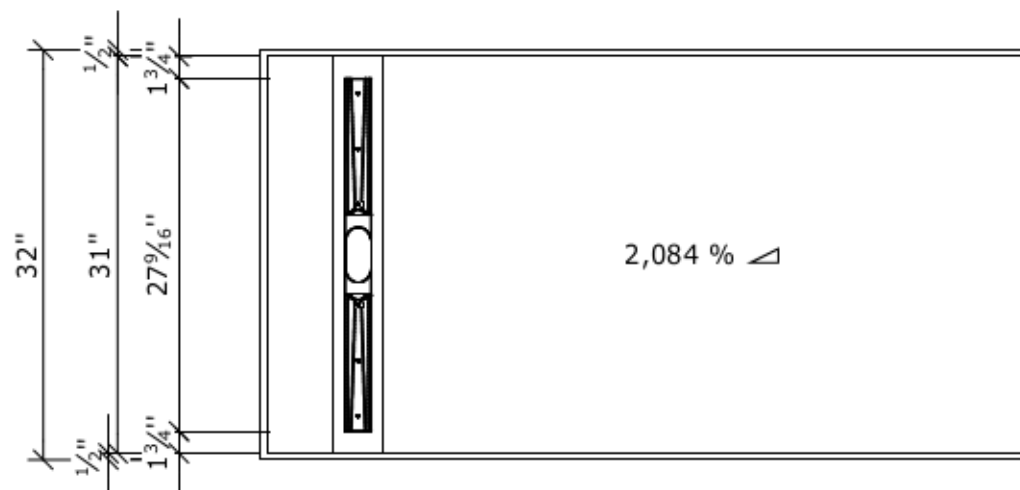
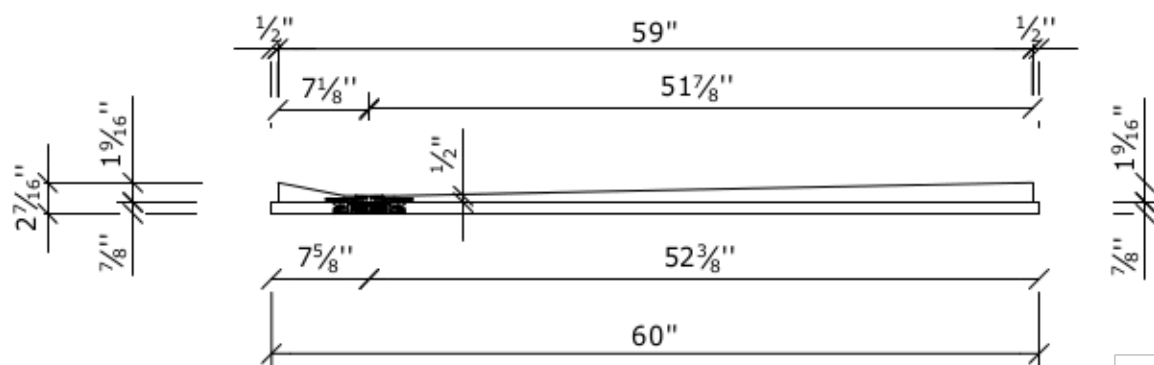
**NOTE:**  
slope 1/4" /ft minimum in all areas  
of shower base surface



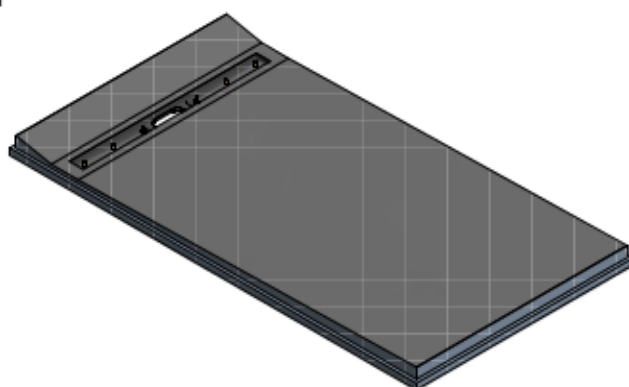
Diese Zeichnung / Skizze ist Eigentum der wedi GmbH und  
unterliegt dem Urheberrecht. Die Verwendung bedarf in jedem  
Fall der vorherigen, schriftlichen Zustimmung der wedi GmbH.

Zeichnungsnummer drawing number				Benennung/ designation	
Z 00 00 57 55				wedi USA FU Riofino 4' x 4'	
Kunde/ client : ---				Art.: 07-37-83/531	
BV/ BP : ---					
				wedi GmbH	
				Hollefeldstrasse 51	
				48282 Emsdetten	
				wedi Vertrieb/ sales	
				Fon +49 (0)2572 / 156 - 0	
				Fax +49 (0)2572 / 156 - 133	
				wedi Projektteilung/project dept.	
				Fon +49 (0)2572 / 156 - 0	
				Fax +49 (0)2572 / 156 - 239	
A	unit of measure	13.06.2012	nd	Fertigungszustand/ Bautoleranzen:	
				finished condition/ tolerances:	
				nach DIN 18202	
Ausg. issue	Änderung modification	Datum date	Name name	Maße in Zoll dimensions in inch	DIN A4
				3D drawn	19.03.2012
				2D drawn	19.03.2012
				CAD/CAM Progr.	
filename: 073783531_USA_Riofino_4x4_Endmaß.ipt					

**... wedi®**



ground plan  
( 1 : 15 )



confirmation of drawing:

date, signature \_\_\_\_\_

Zeichnungsnummer  
drawing number

**Z 00 00 59 40**

Kunde/ client :

BV/ BP :

Benennung/ designation

**wedi Fundo Riolito 32" x 60"**

Art.Nr.: 07-37-83/533

				Datum date	Name name
			3D drawn	22.05.2013	az
			2D drawn	22.05.2013	az
			CAD/CAM Progr.		
			Fertigungszustand/ Bautoleranzen: finished condition/ tolerances: nach DIN 18202		
A	Gefälle/Stärke	27.05.2013	az		

wedi GmbH  
Hollefeldstrasse 51  
48282 Emsdetten

**...wedi**

wedi Vertrieb/ sales

Fon +49 (0)2572 / 156 - 0  
Fax +49 (0)2572 / 156 - 133

wedi Projektteilung/project dept.

Fon +49 (0)2572 / 156 - 0  
Fax +49 (0)2572 / 156 - 239

Ausg. issue	Änderung modification	Datum date	Name name	Maße in Zoll dimensions in inch	DIN A4
----------------	--------------------------	---------------	--------------	------------------------------------	--------

filename: 07378 3533\_Kundenzeichnung\_Englisch.ipt